

# Jenex Ltd

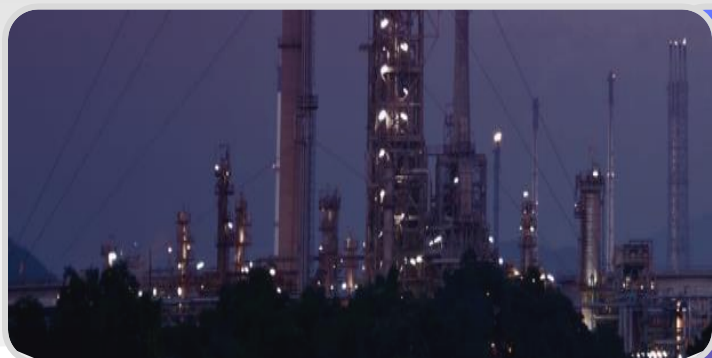
## CATALOGUE 2024

5 Shuttleworth Close  
Gapton Hall Industrial Estate  
Great Yarmouth  
Norfolk, NR31 0NQ

Tel: 01493 602211  
sales@jenex.co.uk



Authorised  
Distributor



Jenex Ltd is the U.K. Authorised Stockist/Distributor and Representative for the following companies:

**Dresser Utility Solutions** - Texsteam Pumps & Spares

**Cameron Valves** – WKM, Demco Butterfly Valves, Demco Gate Valves, Wheatley Valves, Cameron Choke Valves & Cameron Gate Valves

**Sensia** – Barton Chart Recorders and Spares, Nuflo/ Barton Flow Meters and Spares, Totalisers and PD Meters, Barton Bellows Assemblies, Barton Switches, Flow Indicators & Spares

In addition to the above Jenex Ltd market & stock products manufactured by the following companies and brands:

**Kimray** - Valves, Regulators, Temperature Controllers, Glycol Pumps & Spare Parts

**Knick** - Industrial Transmitters & Sensors, Laboratory Sensors, Portables & Fittings

**Cooper Cameron** - Replacement Parts for; "F" - "F C" - "F L" & "F L S" Gate Valves

**McEvoy** - Model "C" 31/8 API 5000 Gate Valves Replacement Parts

**Emerson** - Penberthy Gauges, Keystone Valves

**Graphic** - Pens & Circular Charts for Barton Charts

**Swagelok** - Fittings, Valves & Tubing Accessories

**Leser** - Safety Relief Valves & Spare Parts



## Cameron Engineered Valves

### Cameron H2 Choke Valve

- Available nominal sizes 2", 3" & 4"
- For standard, erosive, and corrosive service

### Cameron FLS 'Full Bore' Gate Valve

- Available from 1-13/16" to 11"
- Pressure ratings from 2,000 to 20,000 psi



WKM Ball Valve

## WKM Ball Valves

### WKM 310 Ball Valves

- Available from 1" to 4" x 3" Reduced Port
- Floating Ball Valves for use in a wide range of applications

### WKM 320 Ball Valves

- Available 1/2" Full Port to 8" Reduced Port
- Floating Ball Valves with Bidirectional sealing capability

### WKM 370D5 Trunnion Ball Valves

- Available in 18", 20" and 24"
- Trunnion Mounted Ball Valves

### WKM 370D6 Trunnion Ball Valves

- Available from 2" to 16"
- Trunnion Mounted Ball Valves with Double block-and-bleed operation

## WKM Butterfly Valves

### WKM Dynacentric MA1 High Performance (Wafer or Lugs)

- Available in 30"
- Positively retained stem prevents blow-outs

### WKM Dynacentric MB1 High Performance (Wafer or Lugs)

- Available from 2" to 36"
- Multiple Seat designs to provide versatility

## NUTRON Forged Steel Floating Ball Valves

### NUTRON Model T3

- Available 1/2" Full Port to 4" Reduced Port
- End connections: threaded, socket weld, and butt weld

### NUTRON Model 320F3

- Available 1/2" Full Port to 8" x 6" Reduced Port
- ASME Classes 600 to 2500

### NUTRON Model 320B3

- Available 1/2" Full Port to 4" x 3" Reduced Port
- ASME Classes 800 to 2500

## CAMERON

### NAVCO Valves

#### NAVCO Series S10

- Available from ½" to 6"
- One piece flanged end Ball Valves

#### NAVCO Series S20

- Available from ¼" to 2"
- Two-piece threaded-end Ball Valves

#### NAVCO Series S30

- Available from ½" to 2"
- Three-piece full-port threaded-end Ball Valves



Demco Butterfly Valve

### DEMCO Gate Valves

#### DEMCO Series DM Gate Valves

- Available in 5000psi and 7500psi
- Inline field repairability

### DEMCO Butterfly Valves

#### DEMCO Series NE-C Butterfly Valves

- Available from 2" to 36"
- Neck length designed to provide clearance on ASME 150 pipe flanges

#### DEMCO Series NE-I Resilient Seat Butterfly Valves

- Available from 2" to 12"
- Short neck design is offered in a variety of body materials

#### DEMCO Series NE-D Resilient Seat Butterfly Valves

- Available from 2" to 12"
- short-neck valve with body notches to fit popular, lightweight flange patterns

#### DEMCO Series NF-C Resilient Seat Butterfly Valves

- Available from 14" to 36"
- Bronze bearings are installed on both stems for reduced operating torque

### Tom Wheatley Check Valves

#### Tom Wheatley Piston Check Valves

- Available from 2" to 12"
- ASME Class 150–1500

#### Tom Wheatley Swing Check Valves

- Available from 6" to 48"

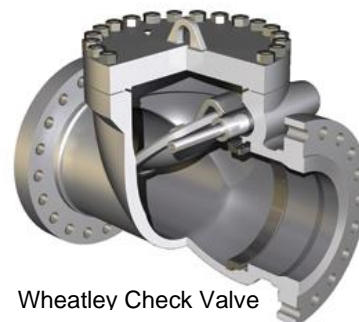
### Wheatley Swing Valves

#### Wheatley Series 500 Check Valves

- Available from 1" to 12"

#### Wheatley Series 822 Check Valves

- Available from ½" to 4"
- Horizontal or vertical flow-up



Wheatley Check Valve



## Barton Chart Recorders

### Barton 202E

- The 202E is a 12" chart recorder, widely used in gas transmission and in production fields because of its high accuracy recording mechanism

### Barton 202N

- The 202N is a 12" chart recorder designed to measure flow, static pressure and temperature in sour gas applications. The 202N meets all NACE requirements for H2S environments, per MR-01-75 (2009) and ISO 15156:2009

### Barton 242E

- The 242E is a 12" chart recorder with pressure and/or temperature elements. Configurations can be any combination of pressure and temperature elements, up to 4 pens.



Model 202E

## Barton Differential Pressure Units, Switches and Gauges

- 199/ 199A/ Differential Pressure Unit
- 200A/ 200AS Differential Pressure Indicator
- 224/ 224C Differential Pressure Unit
- 227A/ 227C Differential Pressure Indicator
- 288A/ 288C/ 289A/ 290D/ 291B Differential Pressure Indicating Switches

## Barton Turbine Meters

### Barton Series 7000

- The 7000 Series Turbine Flowmeters are designed for a broad range of precise Liquid measurement applications
- This built-to-order series features a range of sizes, materials, bearing systems, and options

### Barton Series 7400

- The 7400 Series Turbine Flow Meters are designed for gas service in a wide range of industrial, commercial, pipeline, and aerospace applications
- With the 7400 Series Gas Turbine Flow Meters, the rotor response is in milliseconds, providing precise metering in rapidly changing flow pattern applications

## Nuflo Liquid Turbine Flow Meters

- The Nuflo Flowmeters are available with a variety of end connections – Threaded, Grooved, Flanged or EZ-IN.
- Typical applications are – Water Injections Measurement - Heater Treaters - Test & Production Separators - Disposal Wells - CO2 Injection - Steam Generator Fuel and Feed Water - Metering Liquid Fertilizer - Water, Fuel & Chemical Measurement in Plant Settings - Chemical Tank Loading and Unloading - Measuring Liquid Propane – In-situ Mining & Leaching



Flow Meters



## Turbine Flow Electronics

### Nuflo MC-II Flow Totalizer

- A single lithium battery inside the device powers the unit for three to five years.
- Suitable for outdoor installation and requires no additional protection from the weather

### Nuflo MC-III Flow Totalizer

- The MC-III is available in 3 different housing options – Panel Mount, Weatherproof or Explosion proof
- Record up to 384 daily flow logs, 768 hourly logs, and 345 event logs and downloads them to your computer via Modbus in less than 1 minute

## Nuflo Scanner Flow Computers

### Scanner 2000

- The 2000 series NUFLO Scanner flow computer is a dependable alternative to a manual chart recorder or it can be used as a measurement and control point in a SCADA network

### Scanner 2100

- The NUFLO Scanner 2100 flow computer builds on the NUFLO Scanner 2000 computer functionality and makes deployment in a wired SCADA network easier with more wire entries, more termination space, and nearly 2 years of battery autonomy

### Scanner 2105

- The NUFLO Scanner 2105 computer offers power and I/O options not found on the NUFLO Scanner 2100 computer. When installing the NUFLO Scanner 2105 computer, you can choose from four power source options

### Scanner 2200

- The NUFLO Scanner 2200 flow computer comes with a Division 2 weatherproof package providing ample space for long-haul communications devices, charge controller or DC power supply, and rechargeable battery for solar-powered installations

### Scanner 3100

- Rugged Zone 1, Division 1 packaging with international certifications. Dedicated wiring compartment with four conduit entries. Through-the-glass display control. Optional direct mounted multivariable pressure transducer

### Scanner 3300

- Compact panel mount chassis. Color backlight touch screen display that supports configuration and data access to password controlled authorized users. Integrated Wi-Fi operating as a client or access point



Scanner 2000



Scanner 3300



Scanner 3100



## Texsteam Pneumatic/ Gas Pumps

### Texsteam Series 1200

- Designed specifically for operation on a beam pumped oil well, the Texsteam Series 1200 Chemical Injection pumps are positive displacement type pumps powered by direct connection to the movement of a walking beam, rod line or rocker arm

### Texsteam Series 5000

- The Series 5000 pump is designed for high low and high-pressure applications. Pressure as high as 10,000 psi. Designed for continuous operation

### Texsteam Series 5100

- The Series 5100 pump is powered by gas/air via a diaphragm with a spring return. The pump offers two strokes for adjustable 1" or 1/3" lengths and flow rates

### Texsteam Series 6100

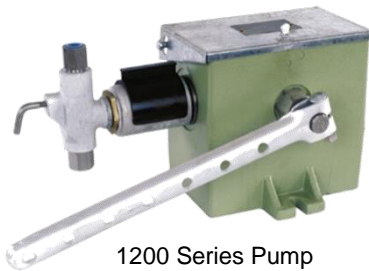
- The Series 6100 Pump are pneumatically driven positive displacement, single or double acting, reciprocating pumps

### Texsteam Series 9000

- The Series 9000 Double Diaphragm Utility Pump is a double acting, positive displacement pump operated on either air or gas.



9000 Series Pump



1200 Series Pump



5000 Series Pump

## Texsteam Electric Pumps

### Texsteam Series 2200

- 1/4 horsepower electric-driven motor (TENV), 316 stainless steel fluid end, Simplex or Duplex available

### Texsteam Series 2400

- 1 Horsepower motor is standard (2 hp optional) 1 or 3 phase - TEFC or explosion proof, Oil-less drive unit, Simplex or Duplex available

### Texsteam Series 2500

- 1/2 horsepower motor standard; optional 1 or 3 phase, TEFC or explosion proof, 50 or 60 Hz, available Simplex, Duplex, Triplex, or Quadruplex configurations

### Texsteam 4300 Series

- Positive displacement, up to 8 pumping heads driven by a single motor - each pumping head capacity is field adjustable 0 to 100% while running, Oil bath lubrication for long gear box life



## Texsteam Solar Pumps

### Texsteam iCIP (Intelligent Chemical Injection Pump)

- Ideal for remote locations – does not require any onsite power source. Wide variety of volume and pressure capabilities. Microprocessor based programmable controller. Continuous injection provides even dispersion of chemical.

### Texsteam HICIP Chemical Injection Pump

- 65 RPM motor allows for 44% more volume per head than the iCIP pump. Variable speed continuous-duty brushless motor design. Same features and benefits as the iCIP pump. Available in duplex and triplex configurations.

### Texsteam Solar Lite Pump

- Economical, easy to use, low maintenance solar chemical injection pump. Capable of pumping against pressures as high as 5,999psi. High efficiency motor requires less batteries and wattage to operate than a standard solar powered pump, at higher pressures.

### Texsteam Multipoint Injection Controller

- The Multipoint Injection Controller offers increased flexibility by distributing different flow rates to various endpoints with one pump head and one injection controller. With the Multipoint, you can now inject four wellheads with just one pump.



Multipoint Injection Controller



Solar Lite Pump



### Kimray Valves

These dynamic control valves and ball valves give you accurate flow control across a wide range of applications

- High Pressure Control Valves
- Liquid Dump Valves
- Low Pressure Control Valves
- Weight Operated Dump Valves



Low Pressure  
Control Valve

### Regulators

Kimray's regulators can be used for back pressure or pressure reduction. Our regulators use gas from your production as the supply to actuate the valve

- Back Pressure Regulators
- Pressure Reducing Regulators
- Differential Pressure Regulators

### Controllers

Kimray provide a wide range of accurate controllers, that can be used in a number of different applications

- Float Operated Controllers
- Pilots
- Relays
- Temperature Controllers



Temperature  
Controller

### Glycol Pumps

Power your gas dehydration system with Kimray's reliable, low-maintenance glycol pumps

- Electric Glycol Pump
- Energy Exchange Glycol Pump



Energy Exchange  
Glycol Pump



Electric Glycol  
Pump



### Industrial Sensors

- pH Sensors
- Conductivity Sensors
- Oxygen Sensors
- ORP Sensors

### Industrial Transmitters

- Stratos
- Protos
- Memorail

### Fittings

- Immersion Fittings
- Flow-Through Fittings
- Inline Fittings
- Ball Valve Fittings



(See [www.knick-international.com](http://www.knick-international.com) for full selection matrix)



Protos 3400X



Stratos Evo

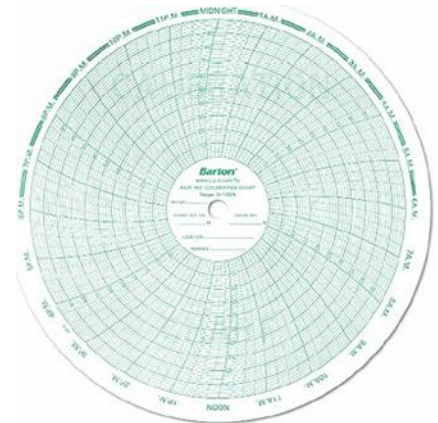
### Chart Paper and Pens

#### Chart Paper Ranges

- 24 Hour Rotation, Chart Ranges between: 0 - 30,000psi
- 8 Hour Rotation, Chart Ranges between: 0 - 30,000psi
- 2 Hour Rotation, Chart Ranges between: 0 - 30,000psi
- 1 Hour Rotation, Chart Ranges between: 0 - 30,000psi
- 96 Min Rotation, Chart Ranges between: 0 - 30,000psi

#### Chart Paper Features

- Repeatable and accurate chart integration
- Factory recorder calibration
- AGA 5 Specification
- Long Shelf Life: Individually boxed & Shrink wrapped
- Tough Construction: Incorporate an Anti-Shrink and Anti-Stretch design and are less likely to tear
- Crisp and Clean Images
- Smooth, low-lint paper finish results in excellent recording characteristics and prevents plugging of the pens
- Charts printed with water soluble resins, instead of
- Oil based ink, to prevent blurring with water-based ink pens
- Special design provides optimum recording results in high humidity environments



We have various ranges of Chart Paper already in stock. When ordering please specify Chart Code (if known), and/or state chart recorder model with pressure range and rotation timescale.

Please visit our website, [jenex.co.uk](http://jenex.co.uk) for even more information on our products and services. This includes more in-depth product descriptions, along with the product specific brochures. On our website you can also view our terms and conditions, quality policy and even meet our team!

5 Shuttleworth Close  
Gapton Hall Industrial Estate  
Great Yarmouth  
Norfolk, NR31 0NQ

Tel: 01493 602211  
[sales@jenex.co.uk](mailto:sales@jenex.co.uk)

